

RM, 721619 Removing and installing control panel trim

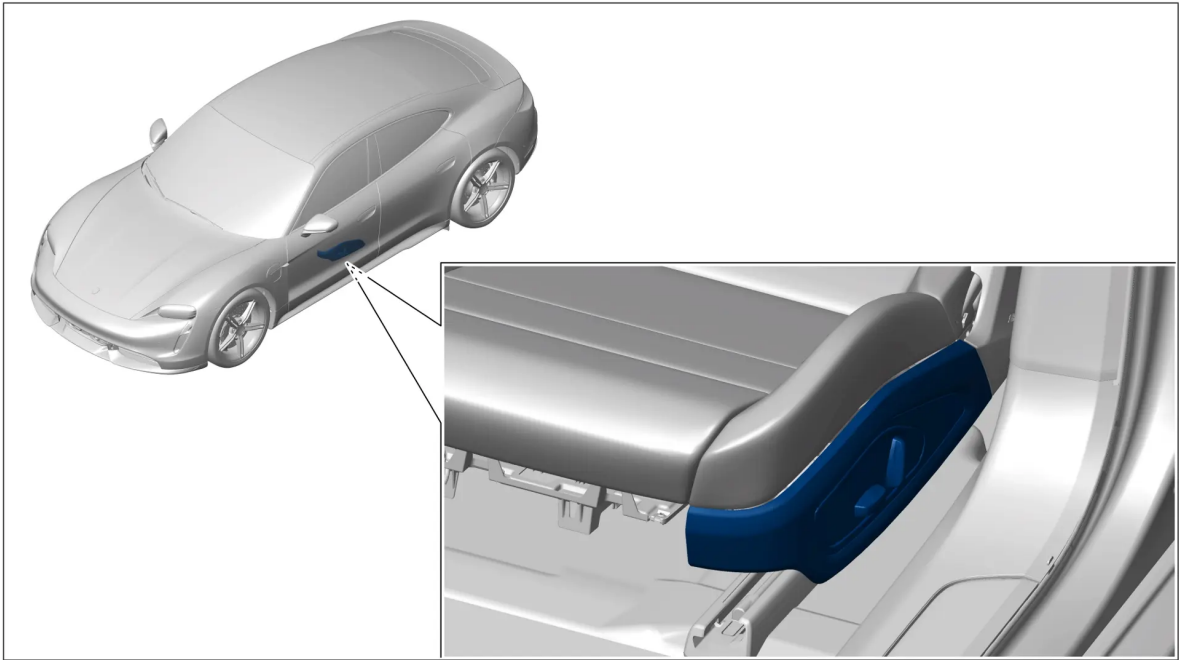
Technical values

Location	Description	Type	Basic value	Lower tolerance	Upper tolerance
Screws securing trim panel for control panel to seat frame	Item 1	Tightening torque	3.5 (2.5 ftlb.) Nm		



Screws

Installation position



Installation position

Preliminary work

- 1 Remove front seat.

720119 Removing and installing front seat

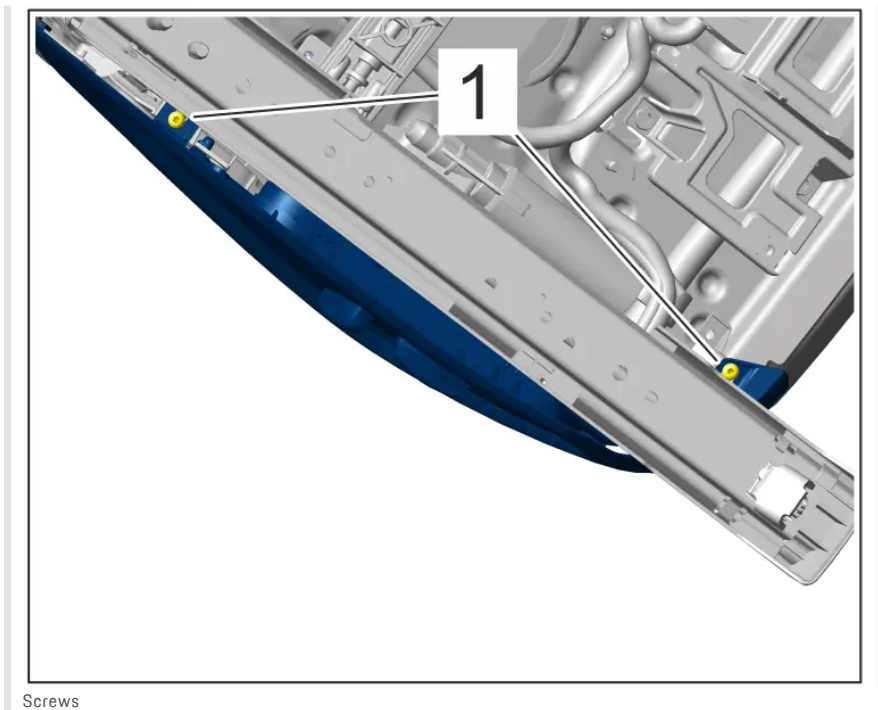
Removing trim panel for control panel

Information

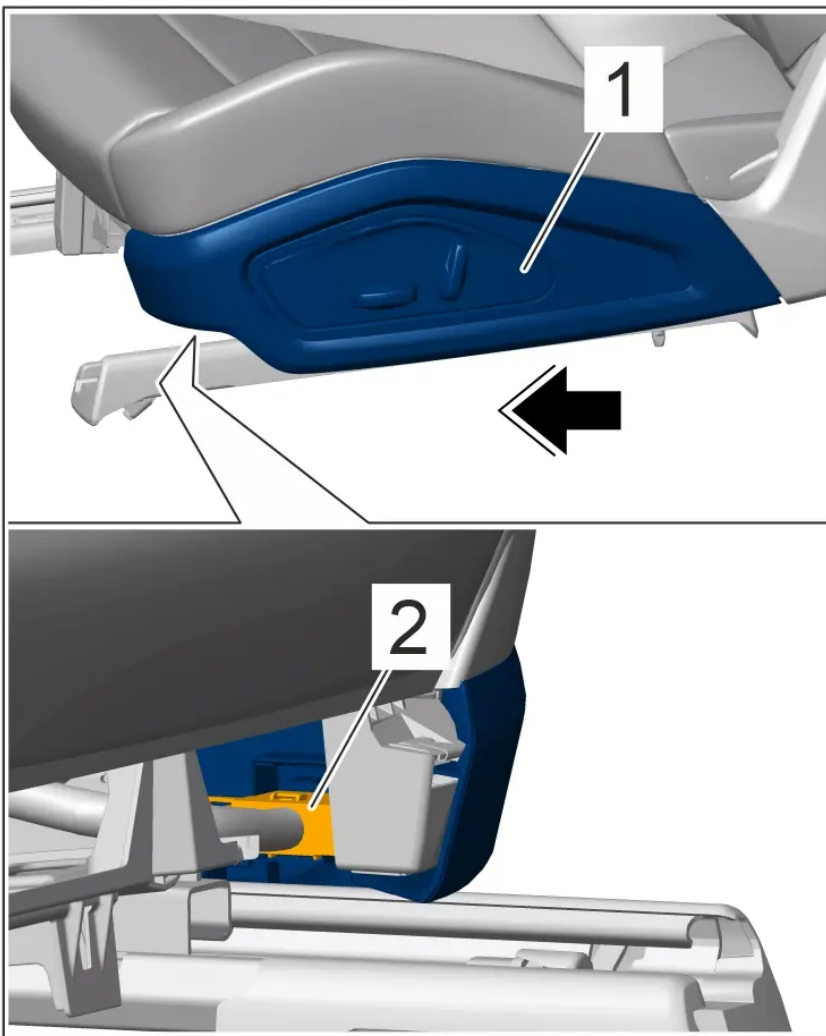
For additional 3D information, see

## 721619 Removing and installing control panel trim

- 1 Unscrew and remove screws -1-.



- 2 Pull out trim panel for control panel -1- ( -arrow- ) and release and disconnect electric plug connection -2-.



Electric plug connection

- 3 Remove trim panel for control panel.

### Installing trim panel for control panel

- 1 Installation is performed in reverse order. Pay particular attention to the following:

Tighten screws to ➤ Tightening torque 3.5 (2.5 ftlb.) Nm

### Subsequent work

- 1 Install front seat.

**720119 Removing and installing front seat**